



Lake Shamineau Association Newsletter

Newsletter No. 13

Spring 2008


Spring membership meeting Saturday, May 24

The spring membership meeting of the Lake Shamineau Association will be held Saturday, May 24, 2008, **9:00 a.m.** in the banquet room at Pine Ridge Golf Club, 34500 Hillcrest Rd.

Minnesota Waters' Executive Director, Marian Bender, will be presenting on shoreland development strategies that protect and maintain water quality. The presentation will include a summary of how Minnesota Waters supports citizen groups who are working on lake and stream protection, as well as the ever-increasing pressures impacting the health of our lake country lakes. In addition, Marian will discuss some recommended actions we can all take for maintaining and improving the water quality of Lake Shamineau.

Arrive early to meet your lake neighbors, enjoy coffee, juice and rolls and to pay membership dues and receive the new numeral for your membership sign.

When you arrive, the membership committee will be organized by street address at the lake to receive your membership dues. The option to pay \$20 for one year or \$55 for three years remains in effect.

Meeting business will include reports from each of the Association committees. 

Marian Bender to speak at meeting

Marian Bender joined Minnesota Waters as the Executive Director in February 2008. A native of St. Cloud, Minnesota, Marian gained experience in water conservation work as the Development Director, and Interim Executive Director, of Friends of the River, California's statewide river conservation group, based in Sacramento, CA. Marian also has extensive corporate marketing and management experience in the high-tech industry, as well as consulting experience in training, process development, and marketing for small companies and non-profits around the country. Having just moved back to Minnesota this past summer, Marian is happy to be back by her family, and happy to be putting her skills and experience to work to save Minnesota's unique and beautiful waterscape.

Minnesota Waters can be contacted at 720 W. St. Germain, Suite 143, St. Cloud, MN 56301. (320) 257-6630; (800) 515-5253. The website is <www.minnesotawaters.org> 



Lake Shamineau Association Membership Meeting Saturday, May 24, 2008 Pine Ridge Golf Club

Agenda

Call to Order 9:00 a.m.

1. Secretary's Report
2. Treasurer's Report
3. President's Report
4. Presentation
5. Committees
 - a. Fishing
 - b. Water Quality
 - c. Membership
 - d. Communications
6. Old Business
7. New Business
8. Board Elections
9. Adjourn





Lake Shamineau Association
P.O. Box 152
Motley, MN 56466
www.LakeShamineau.org

Mission Statement: The Lake Shamineau Association is an organization dedicated to lake conservation, to wildlife habitat, to building of community.

Board Members

President : Mike Fedde, 651-452-2966
Vice President: Bob Koll , 218-575-2577
Secretary: Sandy Williams, 651-487-7916
Treasurer: Pat Held, 218-575-2400
Jennifer Buckentine, 320-202-0761
Al Doree, 218-575-2404
Marlene Friedl, 218-575-2682
Ann Hanson, 320-749-2135
Randy Kevern, 218-575-2844
Jacquie Rognli, 763-441-7239
Rick Rosar, 612-709-6402
Michael Willis, 763-550-2975

Committees

Communications: Newsletter-Jacquie Rognli; Website-Sandy Williams; George Holthus, Ron Fenske.
Fishing: Rick Rosar
Ice Damage & Jacking: Deryl Ramey
Loons & Wildlife: Carolyn Held
Membership: Carolyn Held
Water Quality: Al Doree; Bob Koll

Membership

The membership year for the Lake Shamineau Association is June 1 to May 31. Annual dues are \$20.00. Three-year membership is \$55.00. Non-property owners can join for a \$10.00 associate membership.

Donations

The Lake Shamineau Association is a 501C3 non-profit institution. Donations and dues are tax deductible with your check as a receipt.

Meetings

Association meetings are held the Saturday of Memorial Day weekend and the Saturday of Labor Day weekend.

Newsletter

The newsletter is published two times a year. Deadlines are July 15 & April 15. Submissions can be sent to Jacquie Rognli, editor at LakeNewsletter@msn.com



Note from the President

Morrison County lake report to be available soon

Our speaker at the Memorial Day Weekend meeting is Marian Bender of Minnesota Waters. Minnesota Waters is a public policy organization which studies and informs on lakeshore and river development, invasive species, water quality, and other issues impacting the quality of our state waters.

We considered having Chuck Forss speak on the lake survey last summer. If you don't remember, last summer, County and State officials reviewed each lot on the lake with both comments and pictures from the lake side. Chuck Forss along with Joe Backowski, Jane Starz, Helen McKennen, and Allen Ringkowski were the crew. A picture was taken of each property and notes taken on various aspects of the plant life and care of the lake the property owner showed to the lakeside. These notes are going to be compiled by the above team plus. They are working on giving us a summary of information on each lot but as of this writing, it is not yet complete. The latest promised date is before Memorial Day. There have been several missed expected completion dates given to us since last October.

Chuck Forss has also been replaced by Tammy Gangestad in the role of Water Planning Coordinator. 🐾

Treasurer's Report

By Pat Held

May 9, 2008

Checking account balance = \$302.87
Savings account balance = \$13,364.12
Income

Ad sales for the newsletter = \$350.00

Expenses

25 membership signs and decals for the upcoming membership drive = \$335.48

Total assets = \$13,666.99. 🐾

Email newsletter available

To save printing and postage costs, the Lake Shamineau Association is available by email. Members were asked last fall to send their request via email. Only 21 members have made requests so far.

To begin receiving your copy by email, send a message to the newsletter email [<LakeNewsletter@msn.com>](mailto:LakeNewsletter@msn.com) from the email you wish to have your copy sent. In your message, include the name and address on the mailing label of your newsletter and your lake address so we can avoid duplication. Include in your message:

Name

Newsletter mailing label address

Lake property address

Phone

Email address 🐾



Spring Membership Report

By Carolyn Held

The Lake Shamineau Association has a membership of 209. I believe that to be somewhat inaccurate as there is one group that I have not received as of this printing. The breakdown is:

- 🦆 103 one year members – you should have a 08 on your sign
- 🦆 98 three year members – you should have a 10 on your sign
- 🦆 7 associate one year members
- 🦆 1 associate three year member

The total number of lake shore owners that could be members to the best of my calculations would be about 302.

This year, those of you who purchased one year membership last year, can purchase a one year membership for a cost of \$20.00 and you will get a “09” for your membership sign. You can also purchase a three year membership for \$55.00 and you will get an “11” for your membership sign.

Our drive will begin with the spring annual meeting, May 24 at the Pine Ridge Golf Club. If you would like to pay prior to that date, use the form on the back of the newsletter and mail to: Lake Shamineau Association, PO Box 152, Motley, MN 56466.

The volunteers that canvassed the lake shore owners for dues last year were:

- 🦆 Angle, Arras, Auger –Carolyn Held, Tom Heltemes
- 🦆 Cantleberry, Armore, 18th & 45th Ave – Ron Fenske, Carolyn Held, and Terry Sandstrom
- 🦆 Axis and Hillside- Tom Heltemes
- 🦆 Aztec Road – Pat and Carolyn Held
- 🦆 East Shamineau Drive – Lois and George Gammon
- 🦆 Lake Shore Drive – John Jacobson
- 🦆 Oak Lane – Marlene Friedl
- 🦆 Pine View Blvd – Bob and Cheryl Koll and Cheryl Mashuga
- 🦆 Shamineau View & Ridge Road – Herb Bloomquist
- 🦆 West Shamineau – Doris and Donald Amundson; Tom Heltemes; Carolyn Held

Thanks to all who helped with the membership drive. Please let me know if you can help again this year. We could use help with Cantleberry, Armore, 18th & 45 Ave, Angle, Arras, Auger and West Shamineau. If everyone does a few then it does not make a lot of work for anyone.

If you sell your property, it would be nice to let the membership committee know so that we can get your name off the mailing list and the new owners put on the mailing list. Any help that you could give us on this matter would be greatly appreciated.

Editor's Note: Notice how many areas include Carolyn's name. I'm sure she would appreciate your help. 🦆

Baby on Board!



Raising Baby Loons

When baby loons are just a few hours old, they must already instinctively know who their parents are and how to follow them, how to swim, how to beg for food, what to do when they hear their parent make a warning call, and how to climb up on their parent's back when they get tired or cold.

Biologists suspect there are two primary reasons for back riding:

- Back riding may serve to warm the chick.
- Back riding may reduce predation.

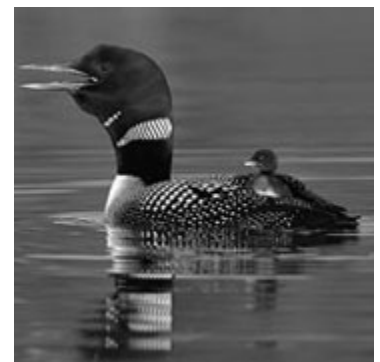
During the first week after hatching a chick may spend more than half its time on adults. After a week there is a sharp drop in back riding.

When any baby birds hatch, they can't regulate body temperature at first. It takes several days for baby loons to be able to stay warm on their own. For several days, they swim only for short periods and then climb up on their parent's back. It helps that baby loons have great big feet.

Loon parents leave their babies sometime around the time that the babies are 11 weeks old. At that point the baby loons can't fly yet. They will have to learn many things all by themselves: how to fly, how to find all their own food, how to protect themselves against predators, and how, when and where to migrate.

There is a good reason for the parents to leave the babies. Loons can't walk on land. Before the babies can fly, they can't leave their lake, even if the lake runs out of food, but the parents can leave in order to ensure that there will be enough food remaining for the babies. 🦆

*Information gathered from
Upper Midwest Sciences
Center US Geological
Service Loon Study
<www.umesc.usgs.gov>
and Journey North
<<http://www.learner.org/jnorth/loon>>*



The importance of Dissolved Oxygen (DO)

Dissolved Oxygen (DO) is found in microscopic bubbles of oxygen that are mixed in the water and occur between water molecules. DO is an important indicator of a lake's ability to support aquatic life. Fish breathe by absorbing dissolved oxygen through their gills. Oxygen enters the water by absorption directly from the atmosphere or by aquatic plant and algae photosynthesis. Oxygen is removed from the water by respiration and decomposition of organic matter.

Measurement of Dissolved Oxygen

Dissolved Oxygen can be measured with an electrode and meter or with field test kits. The amount of oxygen dissolved in water is expressed as a concentration, in milligrams per liter (mg/l) of water.

Dissolved oxygen levels are also often reported in percent saturation. The saturation level is the maximum concentration of dissolved oxygen that would be present in water at a specific temperature. Percent saturation is calculated by dividing the measured dissolved oxygen concentration by the saturation level and multiplying by 100.

Factors that affect Dissolved Oxygen

💧 Volume and velocity of water flowing in the water body

In fast-moving streams, rushing water is aerated by bubbles as it churns over rocks and falls down hundreds of tiny waterfalls. These streams, if unpolluted, are usually saturated with oxygen. In slow, stagnant waters, oxygen only enters the top layer of water, and deeper water is often low in DO concentration due to decomposition of organic matter by bacteria that live on or near the bottom.

💧 Climate/Season

The colder the water, the more oxygen can be dissolved in the water. Therefore, DO concentrations are usually higher in the winter than in the summer.

During dry seasons, water levels decrease and the flow rate of rivers slows down. As the water moves slower, it mixes less with the air, and the DO concentration decreases. During rainy seasons, oxygen concentrations tend to be higher because the rain interacts with oxygen in the air as it falls.

More sunlight and warmer temperatures also bring increased activity levels in plant and animal life. This may increase or decrease the DO concentration.

💧 The type and number of organisms in the water body

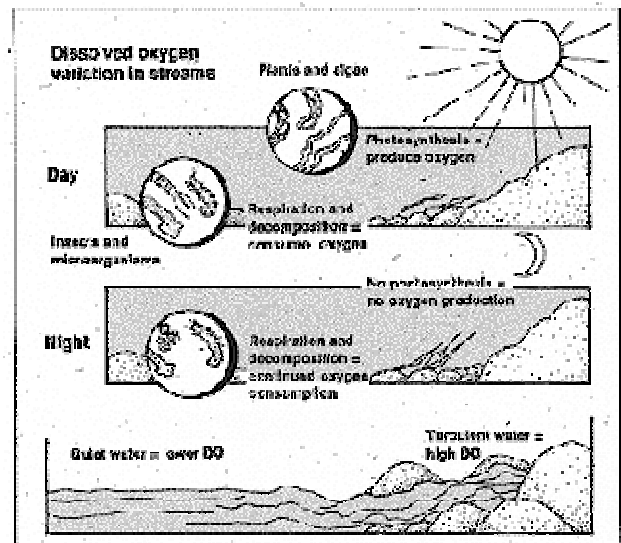
During photosynthesis, plants release oxygen into the water. During respiration, they remove oxygen from the water. Bacteria and fungi use oxygen as they decompose dead organic matter. The type of organisms present (plant, bacteria, fungi) affect the DO concentration in a lake. If many plants are present, the water can be supersaturated with DO during the day as photosynthesis occurs. Concentrations of oxygen can decrease significantly during the night, due to respiration. DO concentrations are usually highest in the late afternoon, because photosynthesis has been occurring all day.

💧 Altitude

Oxygen is more easily dissolved at low altitudes than at high altitudes.

💧 Dissolved or suspended solids

Oxygen is more easily dissolved into water with low levels of dissolved or suspended solids. Freshwater lakes



contain much less salt than oceans, so DO concentrations are higher. As the amount of salt in any body of water increases, the amount of dissolved oxygen decreases. Runoff from roads and other paved surfaces can bring salts and sediments into the lake, increasing the dissolved and suspended solids in the water.

💧 Amount of nutrients in the water

Nutrients are food for algae, and water with high amounts of nutrients can produce algae in large quantities. When algae die, bacteria decompose them and use up oxygen. DO concentrations can drop too low for fish to breathe, leading to fish kills. Nutrients can also lead to increased plant growth. This can lead to high DO concentrations during the day and low DO concentrations during the night. Nitrate and phosphate are nutrients. Nitrate is found in sewage discharge, fertilizer runoff, and leakage from septic systems. Phosphate is found in fertilizer and some detergents.

💧 Organic Wastes

Organic wastes are the remains of any living or once-living organism. Organic wastes that can enter a body of water include leaves, grass clippings, dead plants or animals, animal droppings, and sewage. Organic waste is decomposed by bacteria that remove dissolved oxygen.

💧 Riparian Vegetation

Shading can lower average summer temperature and reduce the daily duration of higher temperature. Removing trees reduces shade on the lake, allowing the sun to warm the water. This can affect DO concentrations. The bare soil exposed from removing vegetation can erode, increasing the amount of dissolved and suspended solids in the water. This also leads to a decrease in DO concentrations.

💧 Groundwater Inflow

Groundwater usually has low concentrations of DO, but it is also often colder than lake water. Groundwater may at first lower the DO concentration, but as groundwater cools the lake, the ability of the water to hold oxygen improves. ➡



Water Quality Report

By Al Doree

Dissolved Oxygen/Temperature meter

The Water Quality Committee talked to the Lake Shamineau Association Board directors about the possibility of purchasing a Dissolved Oxygen/temperature meter for the Association for the purpose of measuring the thermocline in the lake. I contacted the Department of Natural resources (DNR) and the Minnesota Pollution Control Agency (MPCA) and they are both interested in obtaining this data for our lake. As you know, when we were using Aquatech for water quality testing, we measured this about three times each summer.

When I contacted the MPCA, I talked to Jennifer Klang, long time employee of the MPCA, and she informed me that they do this monitoring in around 30 lakes in Minnesota each summer. They have the instruments and send out one of their people to do the testing. I asked about our lake and she said it wasn't on their list of lakes to do but if they have an extra instrument this summer, we could borrow it for this summer. She has since left the MPCA and moved to Michigan as her husband got a new job there. Pam Anderson is taking her place and when I talked to her about it, she was aware of our request and if they have an extra instrument, she will drop it off when she comes up to do some testing, around the first of May and we can use it this summer to gain experience in measuring the Thermocline temperature and Dissolved Oxygen (DO).

I searched the internet, talked to the DNR and the MPCA as well as AW Research and found that there are two such instruments on the market that would meet our needs. The DNR has one brand and the MPCA has the other. The cost of these instruments is in the \$750.00 to \$800.00 range.

My recommendation would be to borrow the unit from the MPCA this year, if it is available, then buy one for the Association for future testing. We would measure the thermocline temperature and DO in the 50 foot hole on the south side of the lake at the same time we collect water for quality testing. (second Monday of each month).

Speaking of Water Quality, I called Chuck Forss of Morrison Co. to see if the Co. was going to pay for water quality testing with RMB labs again this year. His response was NO. The reason is that last year we were in a pilot program, and the new person at RMB labs wrote a grant to cover the cost of water quality testing for Morrison Co. but it was only for lakes that were in the "Impaired Waters" list. As you know, Lake Shamineau is not on that list. The cost of water quality testing will be \$200.00 for five months of testing.

Update May 7, 2008

Pam Anderson from the MPCA dropped off the DO/Temp. meter last night so we have it free of charge for the summer. If we want to buy one for the future of the Association, they are in the \$1200.00 range.

This looks like a very nice meter and they have had very good luck with them. They have about 30 of them.

We will measure the DO and thermocline in or near the 55 ft hole each month when we do water quality testing.

Donna Perleberg from the Brainerd DNR office has the 2005 Aquatic Vegetation (Point Intercept) Survey for Lake Shamineau on their web site now. The links are:

<<http://www.dnr.state.mn.us/lakefind/index.html>>

<http://www.dnr.state.mn.us/eco/pubs_aquatics/veg_reports.shtml>

Ice-out was May 3, 2008. 🐾

Thermocline (sometimes **metalimnion**) = a layer within a body of water or air where the temperature changes rapidly with depth.



Unofficial Patriotic boat parade

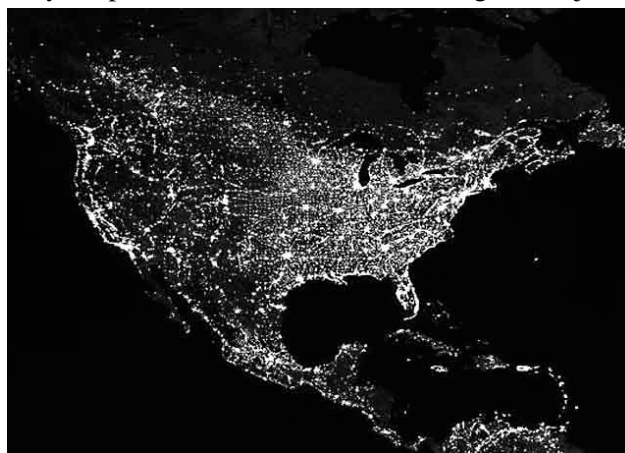
On the Fourth of July, it has become tradition for boat owners to decorate their craft and take a low-speed tour counter-clockwise around the shore, waving to people viewing from their docks. The parade usually begins about 1:00 p.m. at Shamineau Acres Resort.

Just boat over to join the unofficial parade! 🐾



The value of a dark sky

Un-natural light affects the behavior of wildlife and pollutes the night sky. It hinders our night vision and interferes with the natural world that many of us go to the lake to experience. When the sky is truly dark, the only light that you see is star light and your eyes can fully adapt to the darkness. In this setting, the objects beyond our solar system reveal detail hidden under city skies. Objects unseen in the city are visible to the naked eye. Galaxies, nebulae and star clusters are seen with sharp contrast and can be savored, allowing the heart to soar. But we Americans leave our lights on. 🐾



Fall Membership Meeting

September 1, 2007

Camp Shamineau – Media Center at Oak Hollow

Board members present: Mike Fedde, Al Doree, Pat Held, Bob Koll, Randy Kevern, Mike Willis, Sandy Williams, Rick Rosar, Jacquie Rognli, Jennifer Buckentine, Anne Hanson, Marlene Friedl

President's Welcome

Mike Fedde called the meeting to order and welcomed the members to the fall meeting. Approximately 75 members were present. Mike announced that the voting for the photo contest and drawings for door prizes that will take place during the meeting.

Mike described the shoreline survey by the county. Photos were taken of shorelines and will be provided to property owners with any recommendations for shoreline management for a healthy lake. The reports by property will be available in October. A packet will be put together with information and publications of general interest to lake property owners.

Binoculars, a Shamineau cap, a lakescaping book, Landing restaurant gift certificates, flashlight, and other door prizes were given away in a drawing throughout the meeting.

Approval of May 26, 2007 Membership Meeting Minutes

The minutes from the May 26, 2007 membership meeting were printed in the August newsletter. A motion was made to approve the minutes as written. The motion was seconded and approved.

Treasurer's Report

Pat Held, Treasurer, provided the following report:

Asset Balance 1/13/2007		\$7,894.28
Income:		
Memberships, ads	\$7,120	
Interest	36.09	
	Total Income	\$7,156.09
Expenses:		
Water Quality RMB Labs	225.30	
Spring meeting breakfast	387.00	
Newsletters printing, postage	1,196.31	
Other expenses	142.88	
	Total Expenses	\$1,951.49
Balance on Hand Checking 8/31/2007		\$942.65
Balance in Savings 8/31/2007		\$12,156.23
	Total Assets	\$13,098.88

Pat moved to formally thank Vern Sowada for his years as treasurer, seconded and approved.

Camp Welcome

Herb Bloomquist welcomed the group to the camp facilities. He invited lake residents and their families and guests to open gym at the camp on Thursday nights, including use of the indoor skateboard park, climbing wall, volleyball, etc.

Water Quality

Al Doree reported that the lake level continues to go down, and reported statistics compared to official high water level (OHWL) and to the lowest know recorded

level of 1962. Not all years have had measurements officially recorded. The www.lakeshamineau.org website has the official historical measurements. The lake level is currently 17.76 inches lower than the OHWL.

Jennifer Buckentine, Anne Hanson and Al Doree met with the Initiative Foundation in Little Falls and DNR staff to discuss how to prepare a plan for prevention or management of invasive exotic species. The DNR has a program called Point Intercept Survey which surveys lake plant species. Al reviewed the report for Lake Alexander from 2004 which is online on the DNR website. What they subsequently learned was that the same type of survey had been done on Lake Shamineau in 2005, but the report was not yet written. The DNR sent maps to Al which he showed indicating the aquatic vegetation mapping. Curlyleaf pondweed, a non-native species, is located in our lake. The survey sampled 561 sites, 75 meters apart, and found 30 different species. 73 percent of the sampling locations have vegetation, with non-native curlyleaf pondweed in 10 percent of sample sites. This species is thought to have been present for 100 years in Minnesota. The presence of many native plants may minimize spread of the curlyleaf pondweed. There is no environmentally safe way to treat it.

Anne Hanson commented on the importance of this survey as a baseline for future comparison of lake quality. The Lake Shamineau Point Intercept Survey report is expected to be available to view later this fall on the DNR website.

Restore Your Shore CD demonstration

Jacquie presented the "Restore Your Shore" CD on the computer. The CD was developed in conjunction with a book by Carol Henderson, *Lakescaping for Wildlife and Water Quality* available at the Minnesota Bookstore. The CD was developed prior to Windows XP operating system so it requires some computer knowledge to get it to work correctly. The book is an excellent resource and includes an encyclopedia of native plants, and suggestions for and instructions regarding restoring a natural shoreline to protect the shoreline, enhance wildlife and filter water runoff for improved water quality. Members interested in ordering the CD at a group rate of \$20, compared to \$25 individually, contact Jacquie.

Fire News

John & Betty McGuire lost their lake home to a fire during the storm of August when storm power lines went down. The power company turned on the power at the transformer and sparks from the downed line were created. Calls to the power company did not result in sending out a crew and a propane tank exploded causing the fire and total loss of the structure.

An important fact for property owners to be aware of:

Call 911 for any dangerous situation and speak with a live dispatcher who will get appropriate personnel out to deal with the danger immediately.

MEMBERSHIP MEETING MINUTES continued

The new fire numbers at each property are plotted by GPS for fire and ambulance responders to locate properties in case of an emergency.

Sandy Williams directed members to the DNR website "Firewise" program that has educational information about how to manage your lake or rural properties to protect it from the spread of wildfires. Burning restrictions and regulations are also online and there are links from our Lake Association website to these resources.

Fishing

Members want to know how to catch walleyes. Rick Rosar recommends night, the clarity of the lake means darkness is better for fishing. Winter fishing has been very good for walleye, often in 28 inch range. This summer large panfish have been caught off docks, an improvement over past years. Northern pike restrictions require that those caught between 24-36 inches must be released, and one trophy above 36 inches may be kept. Rick reported the age and related size of walleyes surveyed last summer.

Membership

Carolyn Held reported that the association has 195 members. Approximately 20 likely members yet to be contacted. She thanked the members who donate their time in this effort. Volunteers for next year should see Carolyn – help is always needed and appreciated.

New numbers on membership signs were placed during the summer with either 08 or 10 depending on renewal term. If a number was incorrect, please let Carolyn know. New fire numbers are going up, and the county asks that we remove our old red fire numbers and you may continue to use only the old post for the lake association sign. Carolyn asked for changes of address, member must go to courthouse for actual change and this official address is used for labels that the county prints for our newsletter mailing.

Discussion was held about a membership directory. This will be taken under consideration for the future. Work on a member list in conjunction with the emailing of newsletters may enable the preparation of a member directory.

Loon Report

Carolyn Held reported that artificial nests were placed again in the lake this spring but none were nested upon. Loons have been gathering in the east bay lately. One baby was seen with a pair of adults in the southeast end of the lake, but others hatched apparently did not survive this year.

Summer Photo Contest 2007

Photo contest voting took place during a meeting break. \$40 and \$20 prizes given in each category, Fun in the Sun, Sunrise/Sunset, Proud Fisher Person, and Wildlife.

E-newsletter Offered for 2008

Jacquie Rognli offered that for those interested members who sign up, an e-newsletter (pdf format) will be sent rather than a paper copy to save on printing and mailing costs. Please email her at lakenewsletter@msn.com to sign up. Doing this will ensure that she has the correct email address.

Jacquie also indicated that members willing to solicit advertisements for the newsletter are welcome, especially if they know local business owners. The advertising form is available at the Lake Association website. Ads are printed separately and mailed with the newsletter. Advertising revenue helps to offset printing and mailing costs.

A member requested receiving the newsletter a few weeks before the meeting.

Motion was made to adjourn, seconded and approved.

Minutes respectfully submitted by Sandy Williams, Secretary

Board Meeting Minutes January 12, 2008 Hitchin' Rail Restaurant

Board members present: Mike Fedde, Pat Held, Al Doree, Bob Koll, Mike Willis, Jacquie Rognli, Anne Hanson, Randy Kevern,

Absent: Marlene Freidel, Sandy Williams, Rick Rosar, Jennifer Buckentine

Treasurer's Report-Pat Held

Checking Balance	\$191.02
Savings Balance	\$12,887.85
Total	\$13,078.87

Membership report

- 207 members total
- 312 members possible
- 95 not members
- 3 year memberships save work

Fishing

No Report from fishing committee

Fishing comments from members

- 14" of ice on lake
- Not many cars or ice houses on Lake

Water Quality

Water testing will continue and will be paid by county. RMB labs will continue to the testing (Al's recommendation) and we will continue the testing.

There was some discussion regarding the testing of thermocline temperature and dissolved oxygen. Al will ask the various experts he knows about the value of us doing this.

Matching Grant

Received a Carson Companies matching grant for \$150 after receiving \$150 from Dona Snyder.

Advertising program.

We will send forms this year to the various businesses requesting they advertise. We need a form letter and possible follow up program.

Membership dues

No reason to increase this year.

Spring Meeting

May 24; Scandia Valley Town hall if we can get it
Also need space for the fall meeting Mike F to get speaker
– Chuck Forss if we get lake survey done. Will try to get

lake survey information by Spring meeting if we can. This should be done in February (county's part of the work). Mike W and others volunteered to help completing lake survey packets for members.

Need snacks at meeting, coffee, donuts, cups

Website

We need to get Sandy some help for the website. Mike F to find assistance.

Minutes respectfully submitted by Bob Koll and Mike Fedde

Making choices for security at the lake place

Security monitoring vs all-night lighting

By Mike Fedde



How do you handle security at your lake place? Some do nothing, some put farm style light poles up lighting not only their place but everyone in the neighborhood. Some leave many spotlights burning 24 hours a day, and

some have motion lights. Another choice is to hire a security company for 24/7 monitoring. All of these may have a cost, including a big one time cost when your strategy fails as well as start-up cost.

I wanted to compare costs of the lighting choices with hiring a monitoring company. Doing nothing is free and if you don't feel the risk of intrusion is high or you don't keep items of high value on your property then this may be the low cost strategy.

Numerous spotlights or farm style sodium vapor lights are probably of equal cost. One cooperative on the web showed a 250 watt sodium vapor light costing \$10.50 per month in electricity charges. Motion lights have very little operating costs as long as the traffic in front of them is low. Lights that are on when you aren't there and off when you are seem to be an invitation to violate your security rather than enforcing it.

Monitored security is the strongest action you can take and it does cost a little more. Five operations were found that offered something like security and monitoring so I called them. Two did not have a live person answer the phone so they did not seem like a good candidate for a

monitoring operation. The three that answered the phone are Community Sound and Security, People's Security- a subsidiary of Crow Wing Power and Midwest Security and Fire. All are in Brainerd.

Community Sound and Security was the lowest cost and smallest operation with 400 customers offering burglar alarm, door contacts, motion protection and low temperature sensing. There are smoke and water detection options. Cost is \$18.50 per month basic and \$30 per month with Cell phone and setup is around \$400 for basic. They did not have a lot of Morrison County customers.

Midwest Security and Fire claimed 1200 customers. A Basic system setup is about \$499 and the monthly cost is \$20. Freeze-up, fire, and smoke detection can cost more for setup. They use GE Security Pro Systems. Midwest Security and Fire has been in business for 30 years and have 24 hour monitoring. They thought insurance companies discount would be 10-15% if a security alarm is installed.

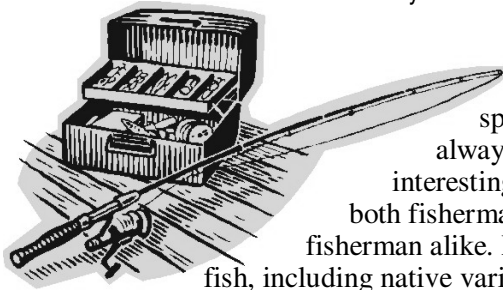
People's Security has 6000 customers in the area. Equipment costs were quoted about \$850 and included two doors and two rooms monitored along with siren and supporting equipment. Low temperature, smoke and water detector cost more yet. Cost is \$20.99 per month. Insurance can go down 3 to 18% per year.

I called my own insurance agent and he stated that we could save about \$60 per year or \$5 per month on insurance with a monitoring system. So if you take out the cost of installation, the security company can cost something like \$5 a month more than a farm light pole. The monitoring is valuable for protecting from break-ins as well as water, freeze-up, and fire damage. The security system sign out front of the property is also a high value item letting vandals and burglars know they will be detected.

All-night lighting provides little protection compared to monitoring and has the shortcoming of light pollution and excessive energy use.

Fishing Committee Report

By Rick Rosar



The process of stocking various species of fish as always sparked interesting debates from both fisherman, and non-fisherman alike. Many species of fish, including native varieties, such as the walleye, cannot sustain fishable levels with the increase of fishing pressure and technology in recent years. Even our premier walleye factories such as Mille Lacs, Cass, and Leech, and most lakes that have never had muskies, must be stocked to keep the anglers and, resort owners as well as the tourism community happy. Though very few people complain about the potential adverse affects due to walleye stockings, there have been some heated debates regarding the stocking of muskies.

In an effort to finally put an end to the unknown speculations regarding the stocking of muskies, the Minnesota Department of Natural Resources (DNR) launched a major collaborative effort involving three divisions within the DNR. The Department analyzed data and resources going back to 1950, and as current as March 2008. Below are their official findings and management implications.

Minnesota Department of Natural Resources Special Publication 166, March 2008

Fish Community Responses to the Introduction of Muskellunge in Minnesota Lakes

Michael L. Knapp^{1*}, Steven W. Mero², David J. Bohlander¹, and David F. Staples³

1 Brainerd Area Fisheries
Minnesota Department of Natural Resources
1601 Minnesota Drive
Brainerd MN 56401

2 Grand Rapids Area Fisheries
Minnesota Department of Natural Resources
1201 E. Hwy 2
Grand Rapids MN 55744

3 Fisheries Research Group
Minnesota Department of Natural Resources
5463-C West Broadway
Forest Lake MN 55025


Abstract

We evaluated responses of seven fish species to muskellunge by comparing catch per unit effort (CPUE) before and after muskellunge were stocked in 41 Minnesota lakes composed of 12 lake classes. The species examined were: northern pike *Esox lucius*, walleye *Sander*

vitreus, yellow perch *Perca flavescens*, bluegill *Lepomis macrochirus*, black crappie *Pomoxis nigromaculatus*, white sucker *Catostomus commersoni*, and tullibee *Coregonus artedii*. We found no significant decreases in mean CPUE among the lakes for any species after muskellunge stocking, either for the stocked lakes as a whole or within lake classes. There was a significant increase in mean CPUE for bluegill over the entire group of lakes and within lake class 24, in addition to an increase in mean CPUE for black crappie sampled by gill nets in lake class 25. Nevertheless, there was large variability in the changes in CPUE among lakes, and several individual lakes had significant increases or decreases in mean CPUE for some species following muskellunge stocking. Because the selection of lakes for muskellunge introductions must follow established, biologically-based guidelines and thus cannot be chosen at random, it is not statistically valid to extend these conclusions to lakes not chosen in this manner. The lack of consistent negative changes in mean CPUE after stocking suggests these fish species have generally coexisted well with muskellunge in these lakes at the densities that have resulted from stocking.

Discussion and Management Implications

Our results indicate that fish communities in lakes actively managed for muskellunge in Minnesota continue to do well while experiencing similar variation in abundance as other Minnesota lakes. The lack of consistent declines in CPUE for any species over the group of MS-stocked lakes suggests these fish species have generally coexisted well with introduced muskellunge populations. Furthermore, comparisons with statewide lake class quartiles showed that MS-stocked lakes maintained similar abundance levels relative to non-stocked lakes.

To summarize in simple terms, Lake Shramineau is a class 27 lake. It is similar in make up to other lakes in the study such as Big Lake, Waconia, and West Battle. These lakes were also compared to the same class of lakes that have not been introduced with Muskies. What the DNR found was for the seven species of fish that were analyzed in these classes of lakes, there were no negative impacts to the other native fish. When looking at Lake Shramineau specifically, only the white sucker decreased in catch rates, which was not determined to be statistically significant when compared to other similar bodies of water. To view the full 23 page report, you can log on at: http://files.dnr.state.mn.us/publications/fisheries/special_reports/166.pdf. 

Lake Shamineau Association
PO Box 152
Motley, MN 56466
www.lakeshamineau.org

**Please support the Lake Shamineau Association by joining now
for the June 1, 2008 to May 31, 2009 membership year.**

Name _____

Address 1 (mailing address) _____

Telephone Number (_____) _____

Email address _____

Address 2 (lake address) _____

☐ Please send my newsletter via Email to save costs.

Membership: ☐ Property Owner \$20.00 (1 year) ☐ \$55.00 (3 years) ☐ Associate Member \$10.00

\$_____ Additional contribution for ☐ Water quality ☐ Wildlife ☐ Fisheries ☐ Other

☐ I would like a membership sign \$5.00

Make checks payable to "Lake Shamineau Association"

Mail to: Lake Shamineau Association

PO Box 152

Motley, MN 56466

ALTRICHTER

SAND, GRAVEL & EXCAVATING



MN State Certified

MIKE ALTRICHTER

Septic Systems

Designer, Inspector & Installer

6685 330th St.
Cushing, MN 56443

Phone: 218-575-2124
Fax: 218-575-3249

Mike Mrozek
Josh Klosowski

hilltopsports@clearwire.net

320.749.2055 office

320.749.2436 fax

Hilltop
SPORTS &
SERVICES INC.
www.hilltopsportsmn.com

Docks, Boat Lifts and Trailers • Sales and Service

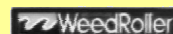
28329 Azure Road, Cushing, MN 56443



20 Mi. North of Little Falls on HWY. 10



*Also offering: Bait, Tackle
and Fish House Sales & Rental



IDEAL
CONSTRUCTION

Steven F. Kobliska & Sons

*Paving the way
for you!*

Staples, MN 56479

218-894-3105

Asphalt Paving - Seal Coating - Fill - Black Dirt - Gravel -
Crushed Rock - RipRap - Sod - Basements - Site Prep - Driveways -
Ag Lime - Parking Lots - Landscaping - Ponds - Demolition -
Hauling - Excavating - Peat

Edina Realty
Inc.
Connecting you with the Lakes

www.judyalrichter.edinarealty.com

Judy Altrichter
REALTOR®, GRI, CRS

"Working with you to make
your real estate dreams come true."



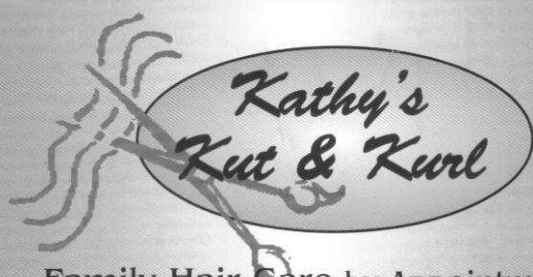
Baxter Office
15354 Dellwood Dr.
Suite 100
Baxter, MN 56425

Direct: (218) 825-3660

Fax: (218) 825-3636

Cell: (877) 820-4847

Email: judyalrichter@edinarealty.com



Family Hair Care by Appointment

(218) 575-2519



218-575-3137
CR3 & Hwy 10 in Lincoln, MN

- Bait
- Tackle
- Licenses
- Gas
- Propane exchange
- Groceries
- Full Deli
- Pizza
- Ice
- Lottery
- Videos

Lincoln Lakes Realty LLC
ON LAKE ALEXANDER

"Pete" Delphus Hanson

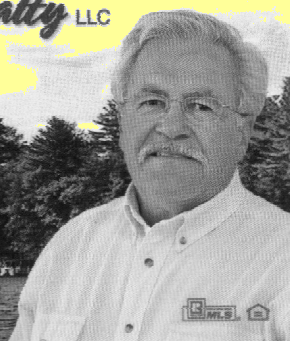
Broker/Owner

218-575-2919

info@LincolnLakesRealty.com

www.LincolnLakesRealty.com

5232 Island View Drive, Cushing, MN 56443
Office is just off County Road 5



Mid-Minn Excavation

34759 Hwy. 10 • Motley, MN 56466

- Septic Systems • Water & Sewer Service •
- Driveway & Road Building •
- Land Clearing •
- Black Dirt • Gravel •

Ken Zetah

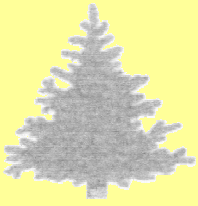
218-575-2469

888-370-0442

Mark Doroff

320-360-5869

We can do it! Give us a call!
Also Rip rap, boulders & rock wall!



PINE POINT MINI STORAGE

Jerry and Norma Gallati
32166 Azure Rd.
Lincoln, MN 56443

218-575-2291 320-761-9615

email jernorgall@brainerd.net

Your Business Name Here

Information about your product or service.

Location

Contact information

Clip art

Deadlines for submission to the Lake Shamineau Association Newsletter are:
Spring Issue - April 15th
Fall Issue - July 15th

Advertising Opportunity

Place your ad in the non-profit *Lake Shamineau Association Newsletter & Website* for coverage around Lake Shamineau and beyond.

Newsletter circulation is 350, sent twice a year to property owners on the lake. Black and white 8-1/2" X 11" multi-page format. Website is www.LakeShamineau.org.

Rate: 2 issues and website included.

\$50 for 1/8 page (4" X 2"; business card size).

\$100 for 1/4 page

\$200 for 1/2 page

\$400 for full page (8 1/2" X 11")

Publication: 2 issues annually, with delivery prior to Labor Day and Memorial Day.

Deadline for Submissions: 7/15/08 or 4/15/09.

Contact: Bob Koll, Sales Coordinator, 218-575-2577

Layout: Sandy Williams, 651-487-7916. Send text or copy to srwillms70@hotmail.com.